

# A Smarter Path to Post-Acute Care

Simplify population health by combining Real-Time Care Intelligence™ at the point of care with artificial intelligence (AI) clinical decision-making support modules.

## Optimize Next Site of Care With Placement and Hospice Referral Modules



### Placement

Reduce excess skilled nursing facility (SNF) and inpatient rehabilitation facility (IRF) stays, total length of stay (LOS) and readmissions



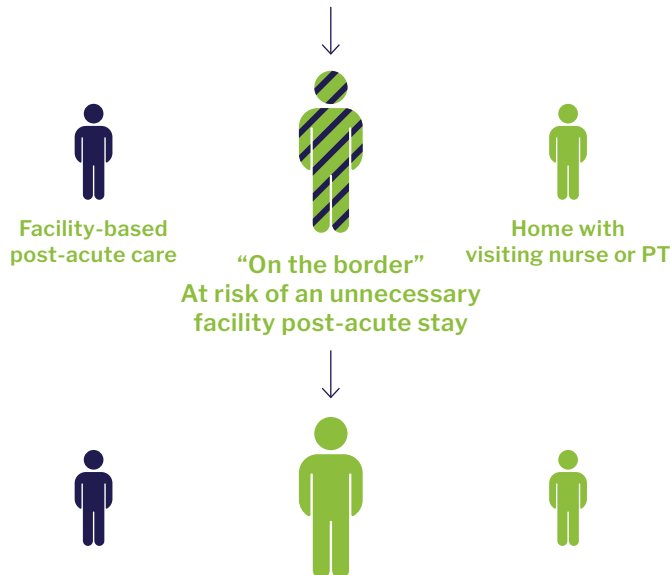
### Hospice

Reduce unnecessary hospitalizations with early, appropriate referrals to hospice

### Did you know?

- 15% of SNF utilization may be unnecessary
- \$10,000 could be saved per SNF stay in favor of homecare
- \$20,000 could be saved per IRF stay in favor of homecare
- 18 days is the median hospice LOS, despite the Medicare benefit covering 6 months, a metric that has not improved for 5+ years

## Smart Placement identifies these hospitalized members



Safely shifts discharge dispositions in favor of homecare, reducing readmissions, total cost of care and hospital days

## Case Study Results



**19% reduction** in post-acute care utilization



**2x rate** of referrals to hospice & **24% boost** in palliative consults



**25% reduction** in 30-day readmissions



Improved Placement ROI of 6:1 and Hospice ROI of 9:1

**Radial and Bamboo Health incorporate data from claims, social determinants of health information, electronic health record data and Pings™ admission, discharge and transfer data.**

## Ready to Turn Insights Into Action for Immediate Savings and Improved Care?



**Generate cost-savings** – Leverage AI for identification of patients who historically would have been discharged to SNFs or IRFs but could be safely discharged to a home health agency instead



**Shorten hospital length of stay (LOS)** – Identify patients who are great candidates for home-based care on day one of hospitalization to allow for initiatives like early mobilization and PT awareness



**Strengthen post-acute care decision-making** – Build consensus with clear explainer notes & data-backed patient journey recommendations



**Determine next-best action** – Sort patients by high-to-low actionability scores



**Increase hospice referrals** – Improve end-of-life decisions, reduce unnecessary medical utilization and improve quality of life for patients and families

Trusted by  
the Best



Caremax

Élevance  
Health