

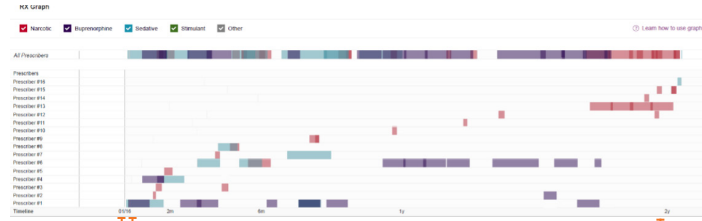
# Understanding NarxCare<sup>®</sup>

NarxCare is an application that provides a set of tools to support prescribers' and dispensers' analysis of controlled substance data from government managed and regulated Prescription Drug Monitoring Programs (PDMPs).

## FEATURES

- Filterable display of controlled substance history
- Two-year timeline view by drug category and provider
- Chart offers specific dispensation details

## NARXCARE PDMP REPORT: DYNAMIC GRAPHICAL DISPLAY OF DISPENSATION HISTORY



Most recent prescriber

Report date

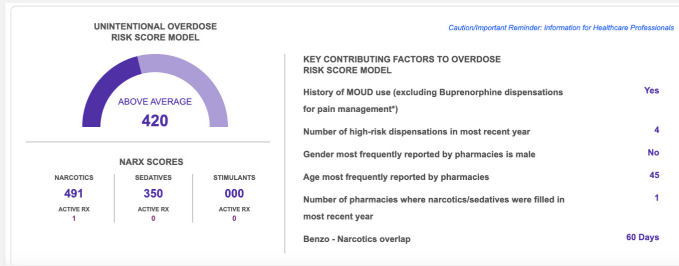
24-month dispensation history, day supply (duration) represented for each dispensation

## BENEFITS

- Shows changes in dispensation history
- Offers visibility to controlled substances prescribed by other providers
- Identifies acute, episodic and chronic treatment history
- Differentiates between single encounters and longitudinal continuity of care

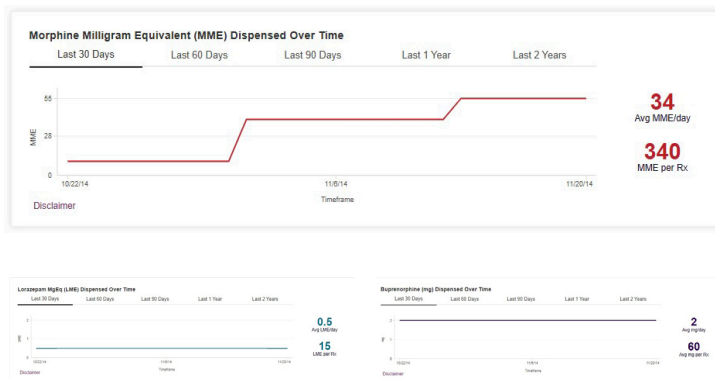
- ORS comprises three digits (000-999), indicating the correlation between patient characteristics, dispensation history and the risk of unintentional overdose, designed to support, not replace, clinical judgment
- Narx Scores reflect past exposure to narcotics, sedatives and stimulants

## ORS & NARX SCORES



- One cohesive analytics tile ensures all data is always displayed together
- Key Contributing Factors provides further insight into how the ORS was derived.
- Narx Scores help draw awareness to the presence of PDMP history, with active dispensations seen below each respective Narx Score
- Narx Scores help differentiate those patients with low- and high-exposure based on multiple prescribers, pharmacies and overlaps

## TREATMENT INTENSITY



- Total Morphine Milligram Equivalent (MME) and Lorazepam Milligram Equivalents (LME) by day over a two-year timeline

- Helps providers identify needs for frequent monitoring, dose taper and/or naloxone and reduce risk of opioid-related harm when considered alongside patient history and other factors
- Provides healthcare professionals with the ability to further review dispensation details directly in the report to support more informed controlled substance decisions

## CURRENT AND 30-DAY AVERAGE

RX Summary		
Summary	Narcotics (excluding Buprenorphine)	Buprenorphine
Total Prescriptions	34	Current mg/day 0.00
Total Private Pay	14	30 Day Avg mg/day 0.00
Total Prescribers	5	Current Qty 0
Total Pharmacies	1	
	Current MME/day 86.40	
	30 Day Avg MME/day 86.40	
	Current Qty 279	

- Comparison between current MME and 30-day MME/day average

*Disclaimer: ORS can be used by a clinician as an indicator to guide further review of details in the patient's prescription history while attending to their patients. ORS is intended to inform medical decision-making and should not be used to replace a clinician's independent clinical judgment. Other patient-centric factors, such as mental health conditions (e.g., depression, anxiety, bipolar disorder, dementia), substance use conditions, respiratory conditions, hepatic and renal conditions, and history of overdose, may influence unintentional overdose death but are not incorporated in the PDMP data used to calculate the ORS. ORS does not provide a specific preventive, diagnostic, or treatment output or directive, is not intended to support time-critical decision-making, and should not be used as sole justification for providing or not providing medications.*