

Are you part of the ACO realizing equity, access, and community health (REACH) model?

Key Information to achieve success.



What is the ACO REACH Model?

CMS is replacing the Global and Professional Direct Contracting (GPDC) Model with the redesigned ACO Realizing Equity, Access, and Community Health (REACH) Model in 2023, which intends to improve care coordination and outcomes for Medicare patients, especially those in underserved areas.

ACO REACH is designed to create a model that has a greater focus on:



Promoting health equity and addressing healthcare disparities for underserved populations.



Continuing the momentum of provider-led organizations participating in risk-based models.



Protecting beneficiaries and the model with more participant vetting, monitoring, and greater transparency.

Considerations for Organizations Looking to Succeed in the ACO REACH Model

Organizations should look to ensure success in the ever-changing world of value-based care by focusing on core strategies applicable across models.



Maximize Revenue

- Beneficiary engagement tactics that support retention
- Processes to support maximizing quality scores

Maximize Shared Savings

- Care management resources and processes to minimize avoidable or unnecessary care utilization
- Beneficiary engagement tactics that support proactive preventative care

“As we look toward the future of the healthcare industry, we can glean a lot from the changes CMS implemented through the switch to the ACO REACH Model and what these changes signify for the future of care collaboration. With an eye to health equity, we are now at a point where **the focus of healthcare IT needs to shift from simply enabling a foundational level of interoperability to realizing the value that actionable interoperability can deliver to providers in support of value-based care models such as ACO REACH.** The ability to seamlessly collaborate on patients offers the promise of making the lives of providers easier and more efficient to decrease care gaps, improve patient health and reduce total cost of care.”

— Vatsala Kapur, Head of Government Affairs at Bamboo Health



How Real-Time Beneficiary Data And Actionable Interoperability Can Help

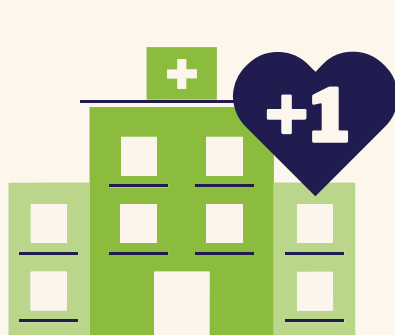
With **FOUNDATIONAL** Interoperability

- Lack of data quality
- Challenges with data standards
- Complicated exchange protocols
- Issues with privacy, security, compliance

With **ACTIONABLE** Interoperability

- Leverage real-time data to surface clinical and contextual information and enable process automation
- Deliver decision-ready analytics and activity triggers within a providers' workflows, enabling process automation and accounting for patient preferences

Actionable Interoperability in Practice: Examples of Results Using Bamboo Health



250% increase
in post-discharge visit completion rate in one quarter

Nationwide Provider Organization

- Challenge**
Delayed visibility of patient care events (8-10 day avg) leading to gaps in discharge follow-up and missed care coordination opportunities
- Solution**
Pings, which provides real-time event notifications and streamlined workflows
- Results**
250% increase in post-discharge visit completion rate in one quarter



25% reduction
in 30-day readmission rates

50/50 Hospital/Physician led ACO

- Challenge**
Managing ACO patients at affiliated SNF facilities without integrated communication
- Solution**
Pings solution integrated with preferred SNF facilities
- Results**
25% reduction in 30-day readmission rates and 28% reduction in SNF LOS

28% reduction
in SNF LOS



Want to chat with us?

Reach out at bamboohealth.com/aco-care-management