



A ROBUST SOFTWARE APPLICATION WITH ANALYTICS TO SUPPORT REVIEW OF PRESCRIPTION DRUG MONITORING PROGRAM (PDMP) DATA.

NarxCare is an application that provides a set of tools to support clinicians' analysis of controlled substance data from government managed and regulated PDMPs.

The Solution

The NarxCare application automatically analyzes PDMP data and delivers scores and visualizations of usage patterns based on the data, to further enable informed prescribing and dispensing practices.

The NarxCare application is user-friendly, easily integrated into a patient's electronic medical record and interoperable with other PDMPs. This document provides an overview of the NarxCare application and a breakdown of the report and analytics tools.

THE BENEFIT

Medical care teams can make more informed and confident prescribing and dispensing decisions for their patients.



Disclaimer: NarxCare is an application that provides a set of data, visualizations and analytics to support prescribers' and dispensers' review of controlled substance data from government managed and regulated Prescription Drug Monitoring Programs (PDMPs). NarxCare is intended to aid, not replace, medical decision making. None of the information presented in NarxCare should be used as sole justification for providing or not providing medications.



Bamboo Health operates entirely within HIPAA's privacy and security requirements, including the encryption of all data in transit and at rest. NarxCare is also HITRUST CSF® Certified, meeting industry-defined standards when it comes to managing risk.

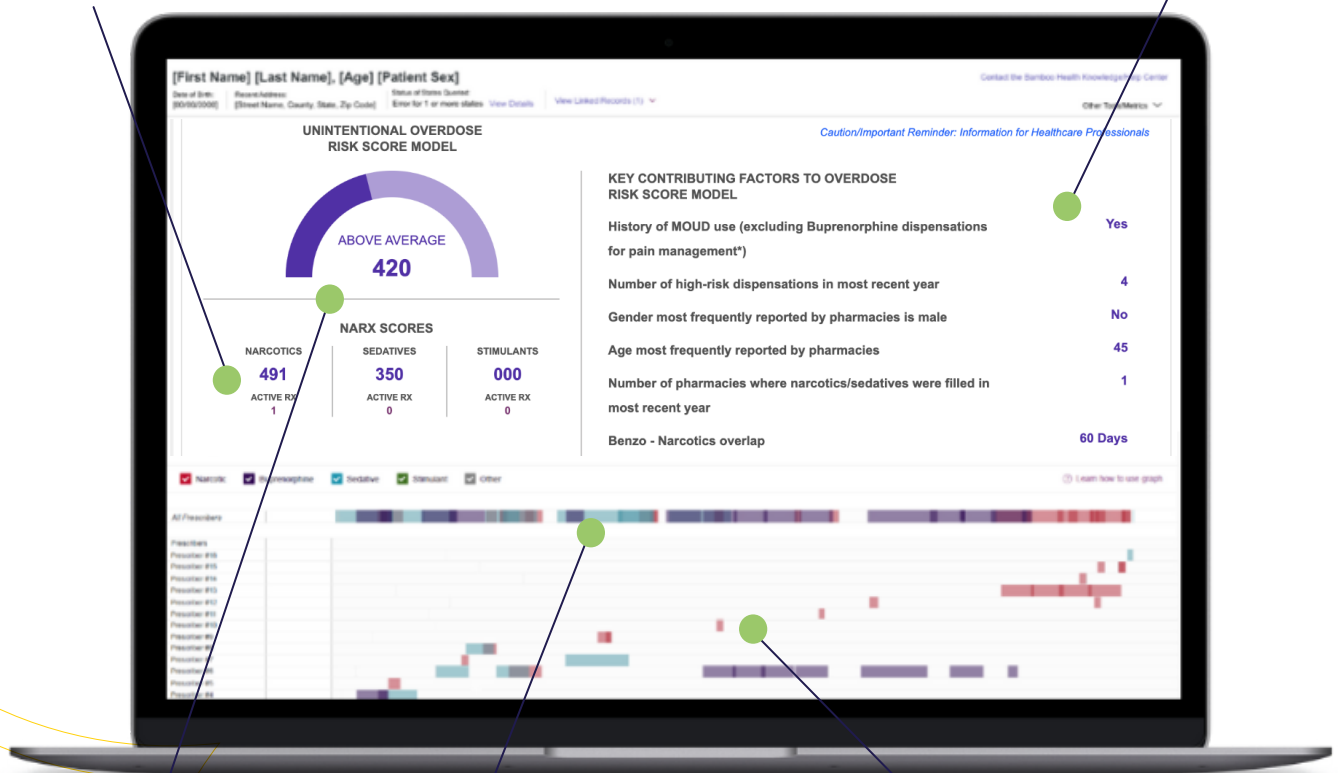
The Narx Report

1 THE NARX SCORES

The Narx Report provides a PDMP authorized user a summary of a patient's exposure to narcotics, sedatives and stimulants based on PDMP data in a user-friendly and interactive format.

2 KEY CONTRIBUTING FACTORS

Offers PDMP authorized users state-customizable indicators, which provide additional awareness to authorized users to help avoid possible unintentional overdose or other adverse events.



3 ORS

Helps a PDMP authorized user understand how a patient's PDMP data may correlate with characteristics of individuals who experienced an unintentional overdose death.

4 RX GRAPH

Allows authorized users to view the data they need, analyze data and click into specific data points in more detail.

5 PDMP DATA

Aggregates government managed and regulated PDMP data on controlled substances, including data on dispensations, providers and pharmacies.

Disclaimer: ORS can be used by a clinician as an indicator to guide further review of details in the patient's prescription history while attending to their patients. ORS is intended to inform medical decision-making and should not be used to replace a clinician's independent clinical judgment. Other patient-centric factors, such as mental health conditions (e.g., depression, anxiety, bipolar disorder, dementia), substance use conditions, respiratory conditions, hepatic and renal conditions and history of overdose, may influence unintentional overdose death but are not incorporated in the PDMP data used to calculate the ORS. ORS does not provide a specific preventive, diagnostic or treatment output or directive, is not intended to support time-critical decision-making, and should not be used as sole justification for providing or not providing medications.

How can we help?

[BAMBOOHEALTH.COM/CONTACT](https://bamboohealth.com/contact)