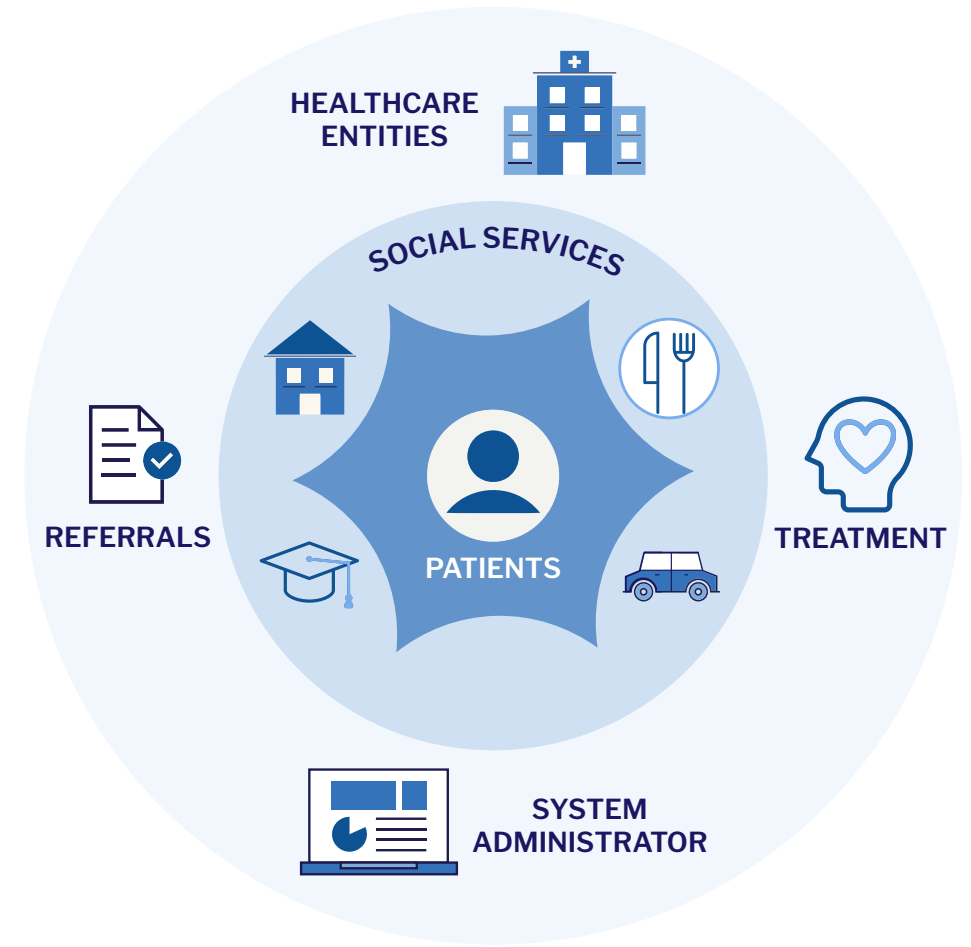


The Solution

Delaware's Division of Substance Abuse and Mental Health chose OpenBeds, a cloud-based application that identifies, unifies, and tracks behavioral health resources, to create their digital referral system, **Delaware Treatment and Referral Network (DTRN)**.

Figure 1: OpenBeds builds and engages a network of treatment facilities and providers across the care continuum to mitigate substance use disorder and improve mental health.



Program Success

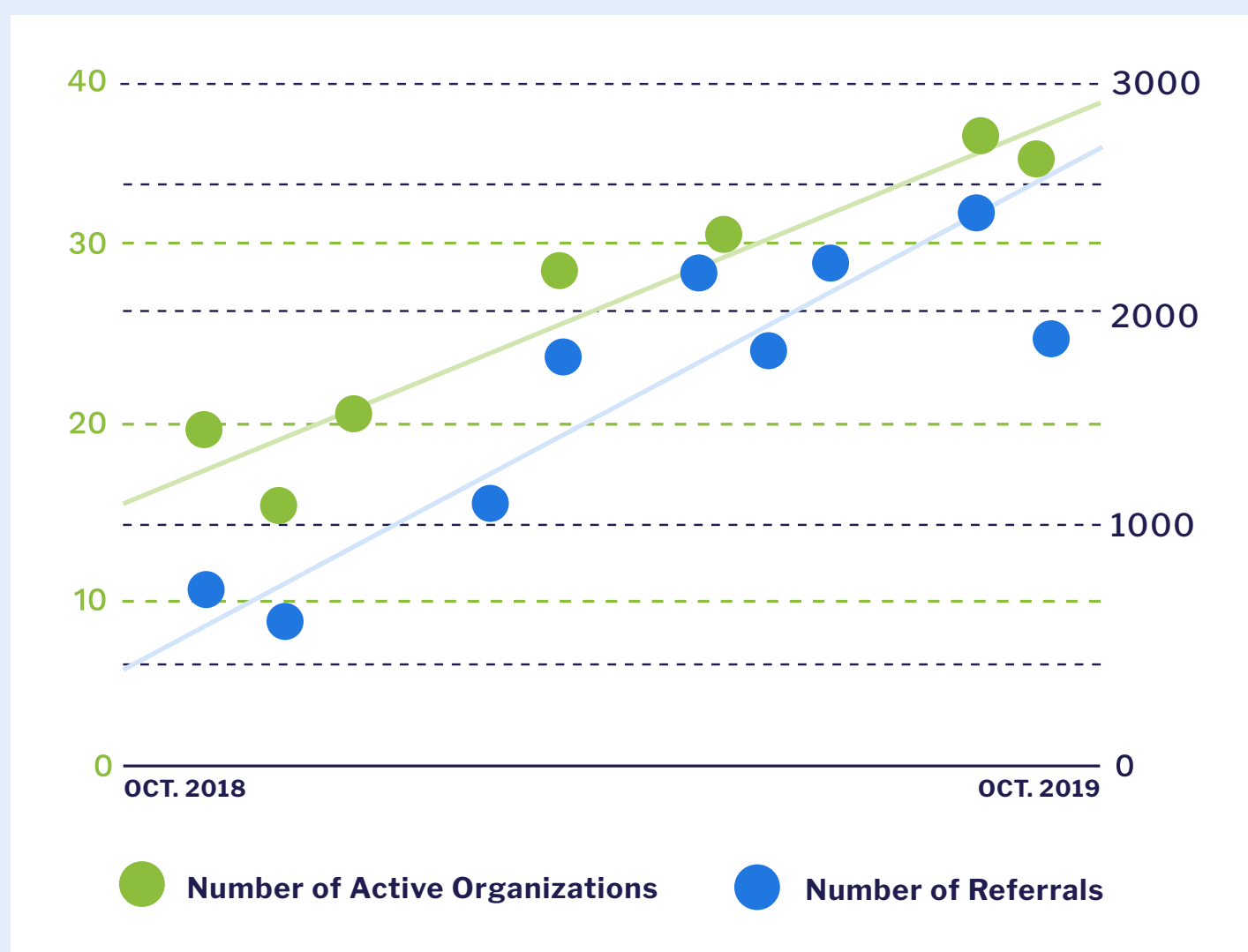


Figure 2: Number of referrals by month

The success of the DTRN clearly illustrates the care gaps in our behavioral health system today. Substance use disorders and mental health issues are inextricable, and it can be next to impossible to find a placement for a patient with multiple conditions. The fact that **60% of referring organizations in Delaware made at least one referral request every week** shows the steady increase in demand.

Nishi Rawat, M.D., MBA
Chief Clinical Officer

Program Insights

Alcohol, opioids, and cannabis were the most prevalent substances used by patients in referrals citing substance use. **Most referrals cited the use of five or more substances.**

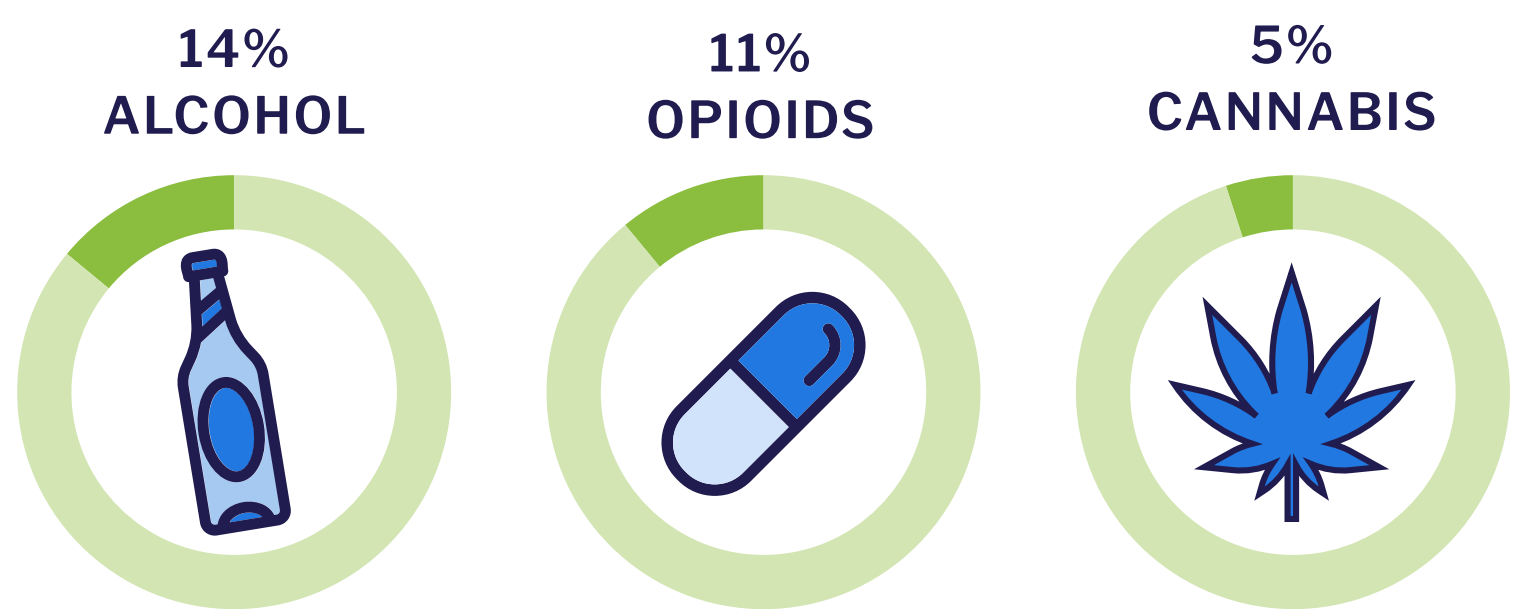


Figure 3: Patient Referral Attributes - Substances Used

In Their Own Words...

With this real-time online inventory of services, we've seen a **statewide increase in referrals for treatment, as well as reduced referral times...** Moving to electronic referrals means our clinicians can complete prior authorizations quickly and ensure a smooth admission process for our most vulnerable populations.

Joanna Champney
Division Director
Delaware Division of Substance Abuse and Mental Health

